

PREDATOR

V8 4X4 FLAT PACK BUGGY

FLAT PACK – DIY



Build Your Own Flat 4X4 Pack Buggy



FLAT PACK KITS



Build Your Own Flat 4X4 Pack Buggy

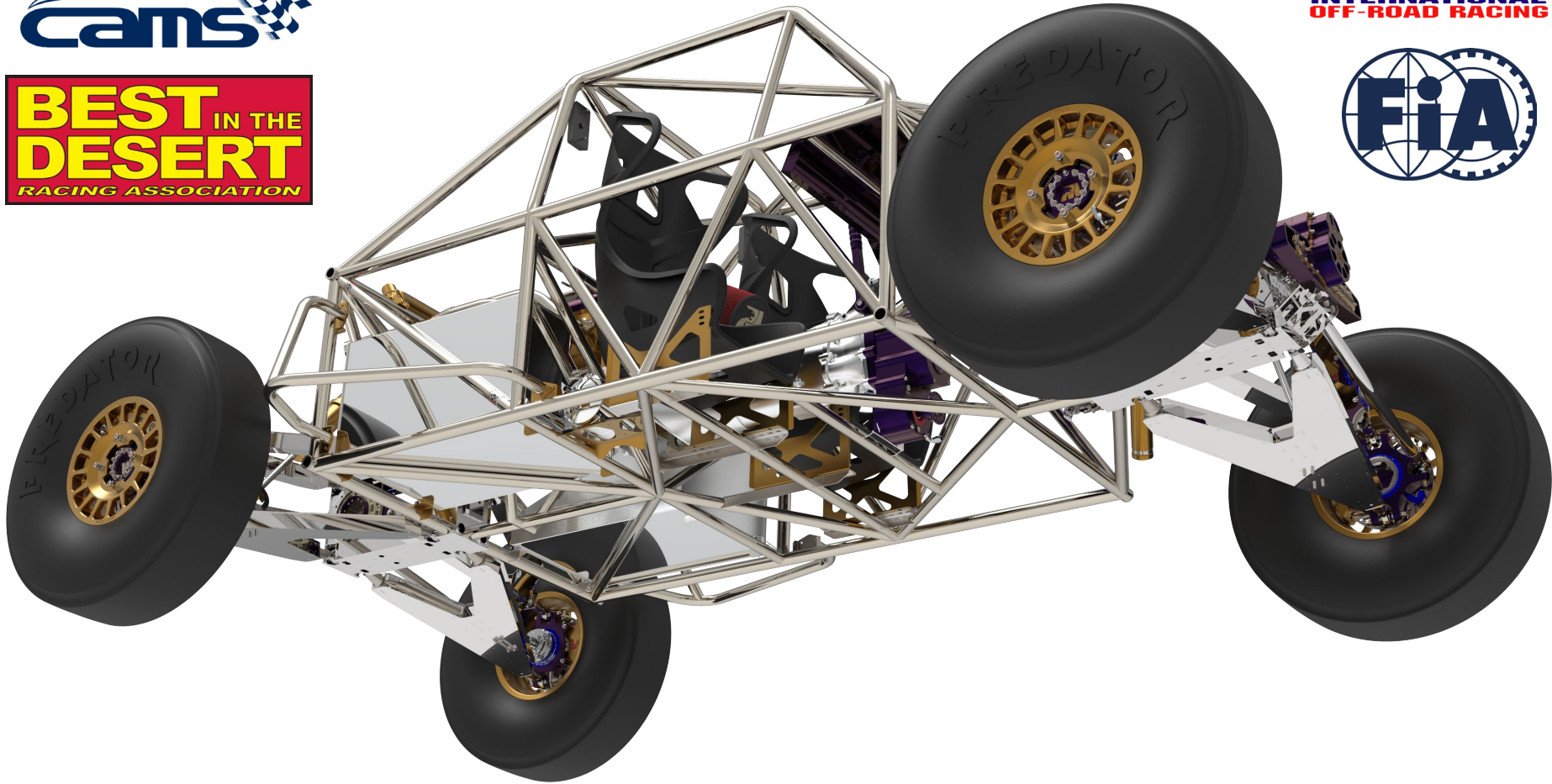




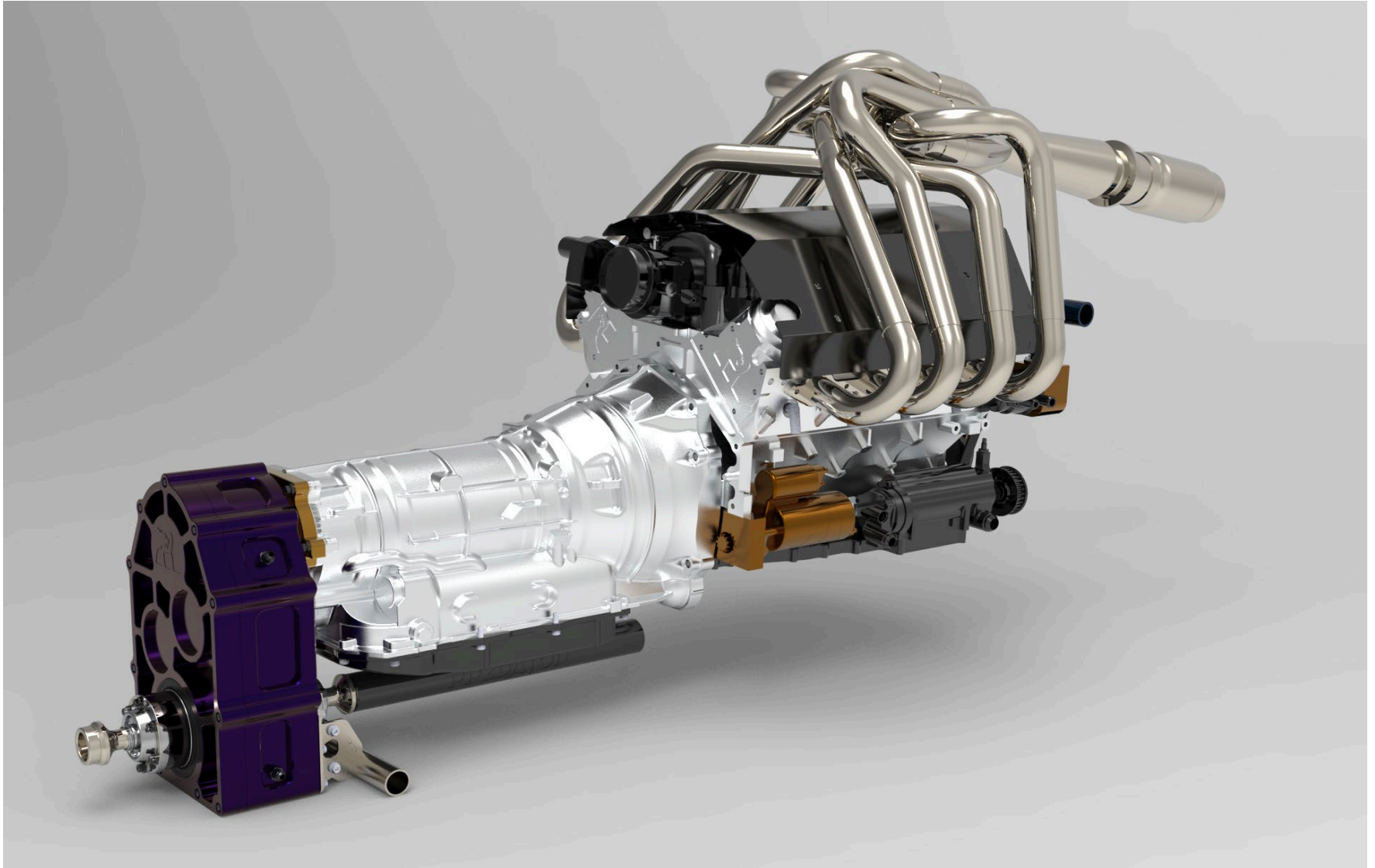




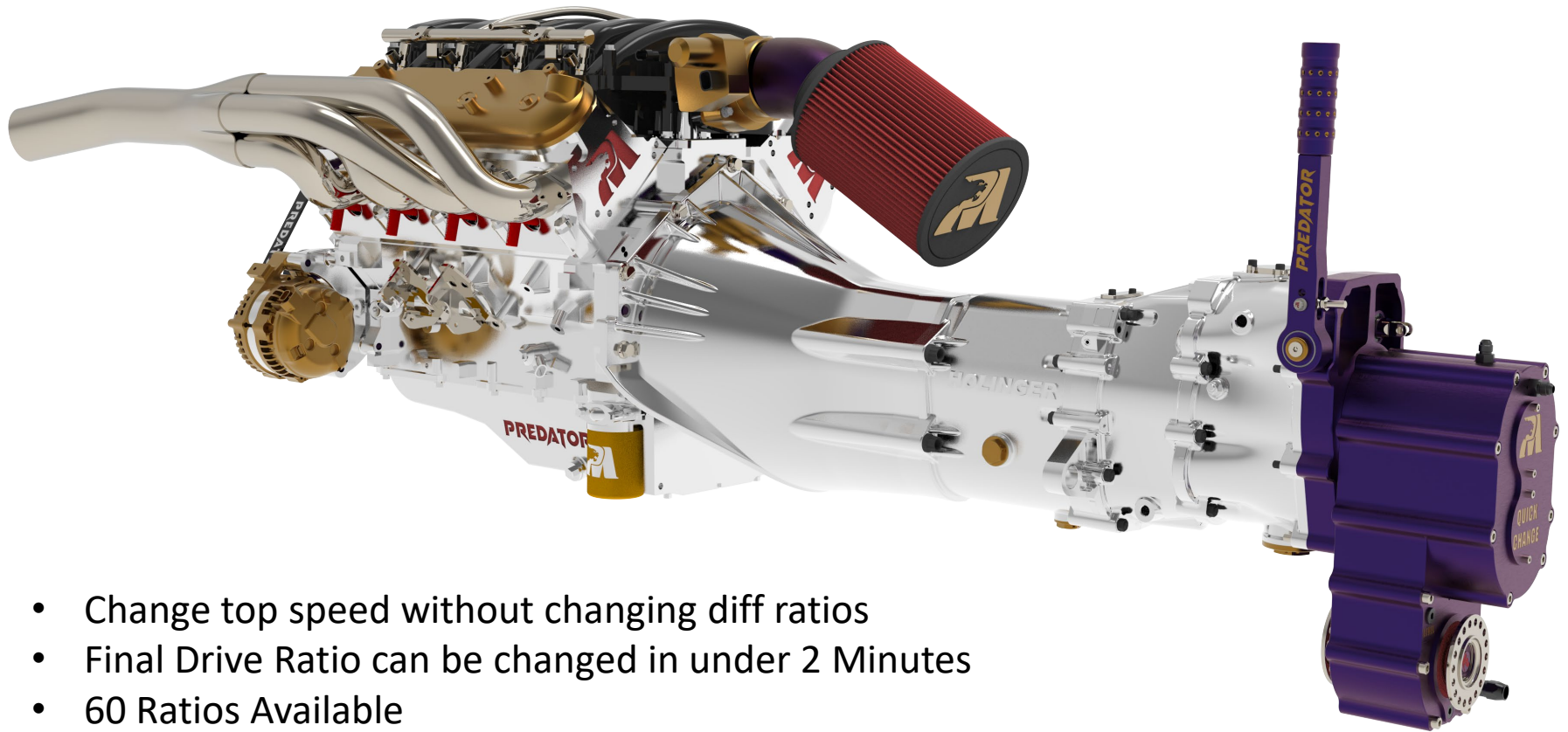
SCORE – BITD – FIA – CAMS – RACE LEGAL CHASSIS



V8 + 8HP70 8 SPEED "PADDLE SHIFT"



V8 + 6 SPEED SEQUENTIAL + QUICK CHANGE TRANSFER CASE



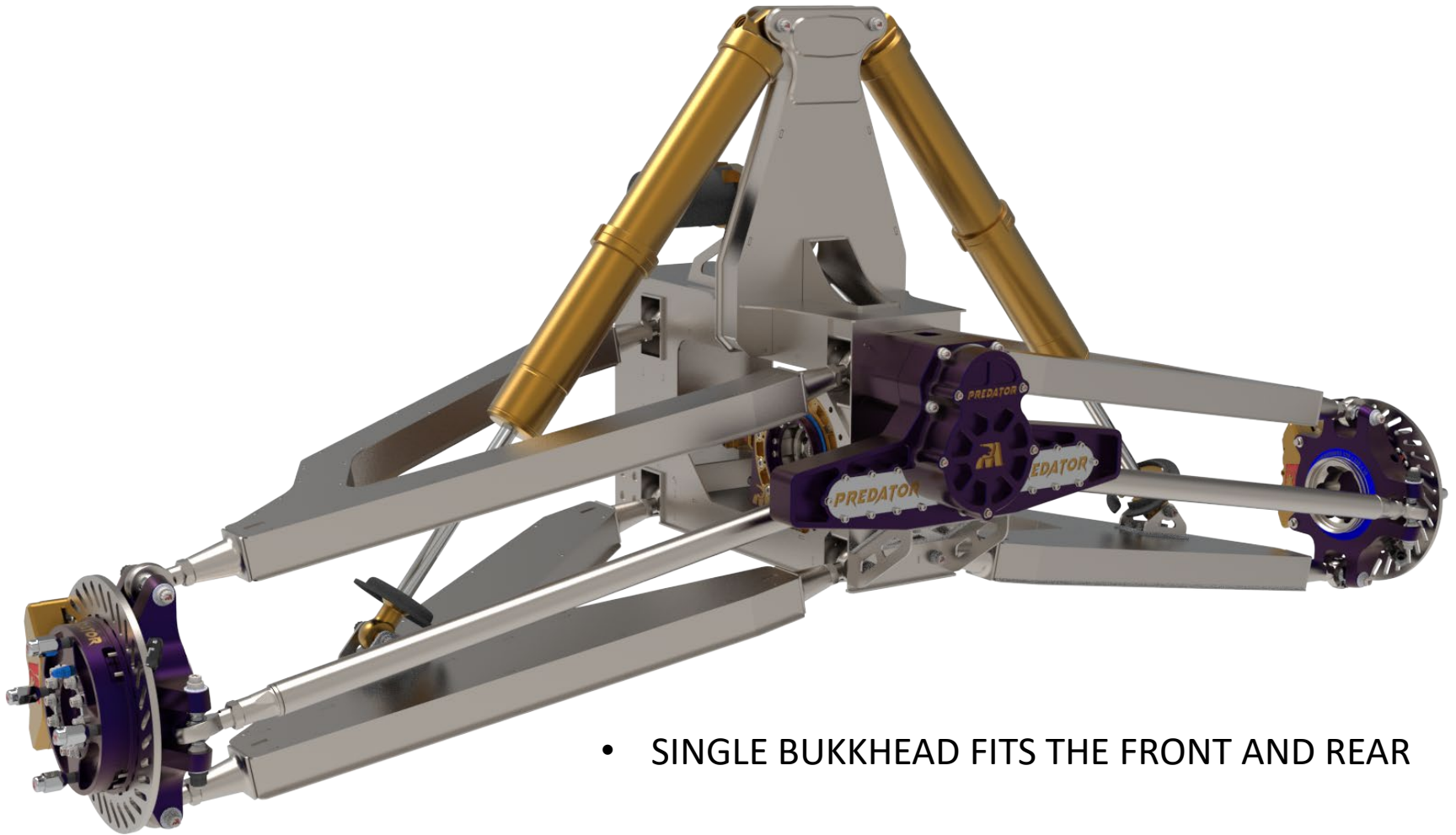
- Change top speed without changing diff ratios
- Final Drive Ratio can be changed in under 2 Minutes
- 60 Ratios Available



30 INCHES WHEEL TRAVEL – 30 DEGREE STEERING



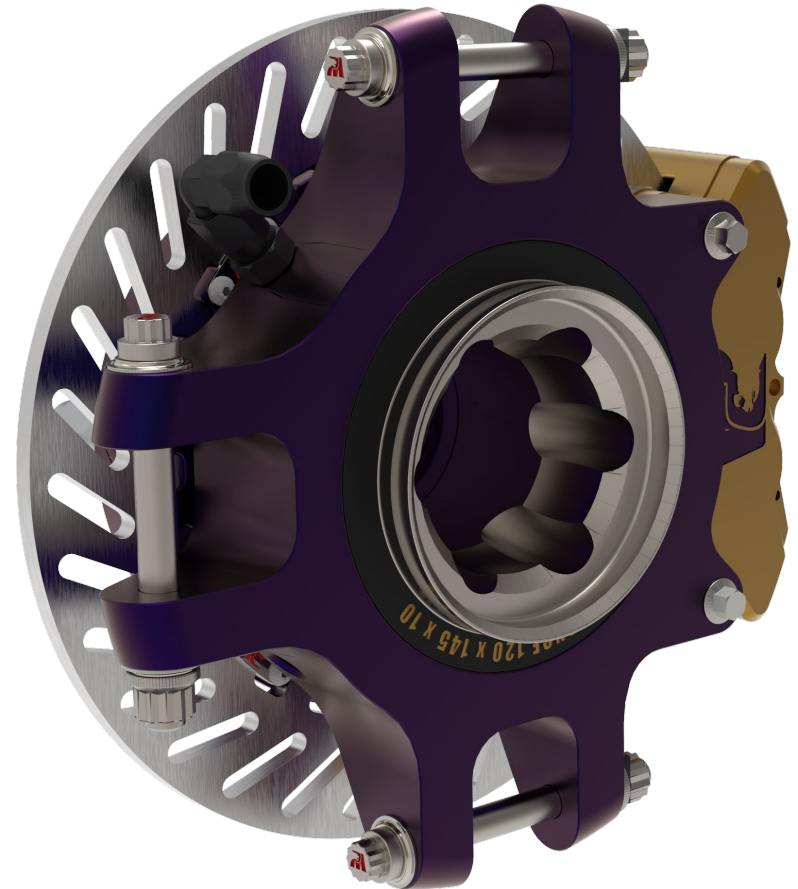
SYMETRICAL BULKHEADS (FRONT AND REAR)



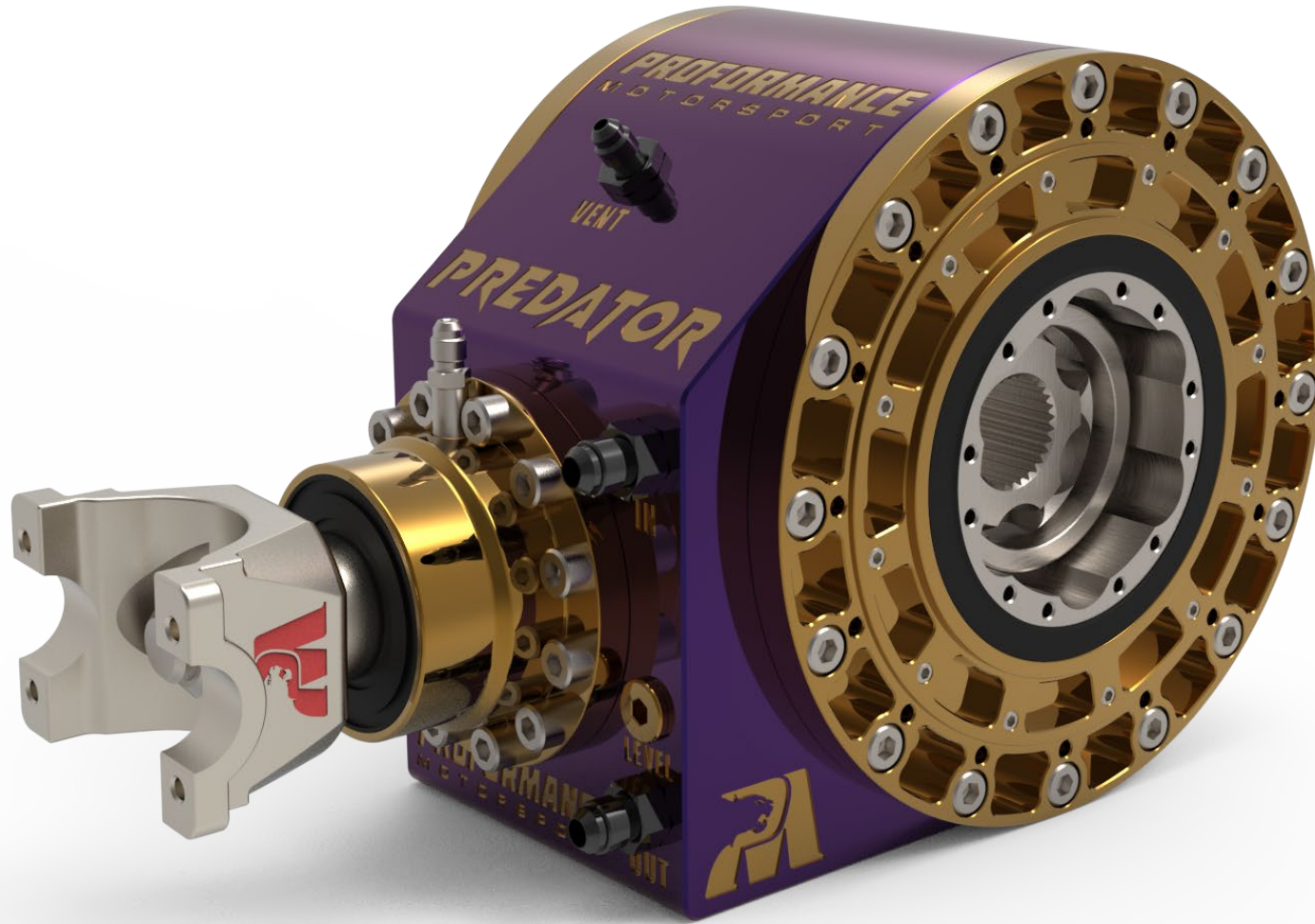
- SINGLE BULKHEAD FITS THE FRONT AND REAR



SYMETRICAL HUBS – FRONT/BACK/LEFT/RIGHT



ULTRA NARROW DIFFERENTIALS – INTERNAL CV JOINTS

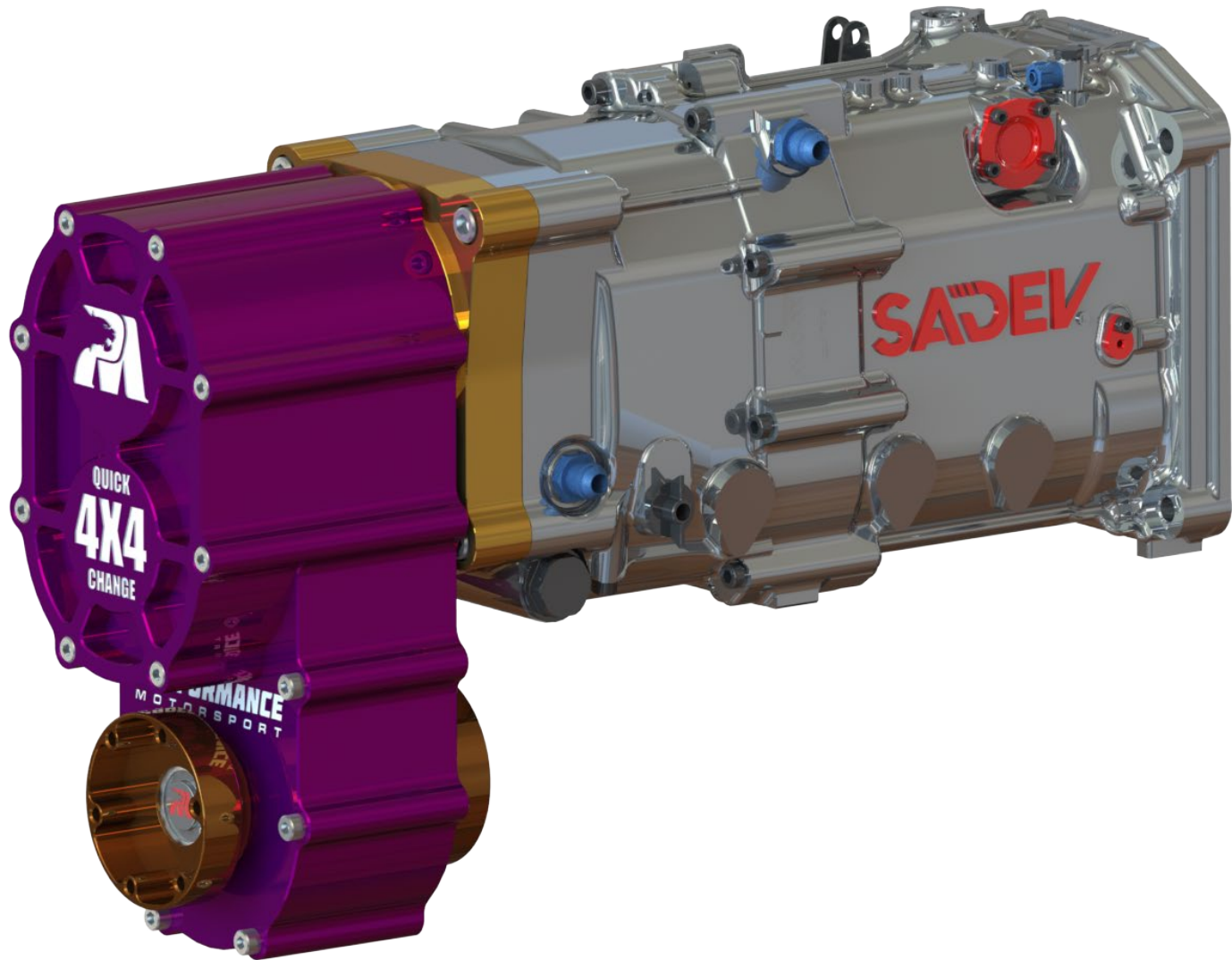


ELECTRIC POWER STEERING RACK

(100% Sealed – Waterproof)



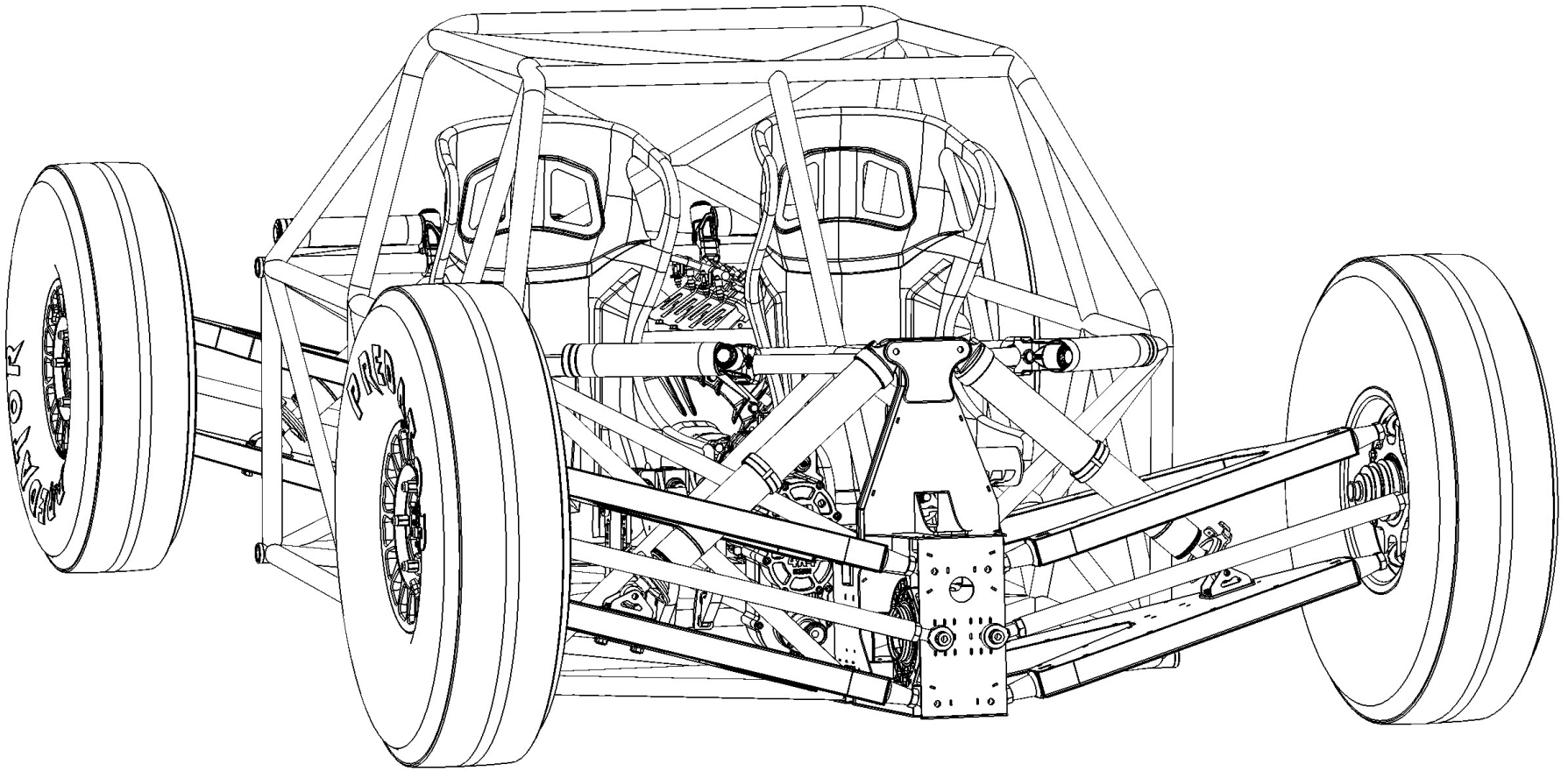
QUICK CHANGE 4X4 TRANSFER CASE



FLAT PACK KITS



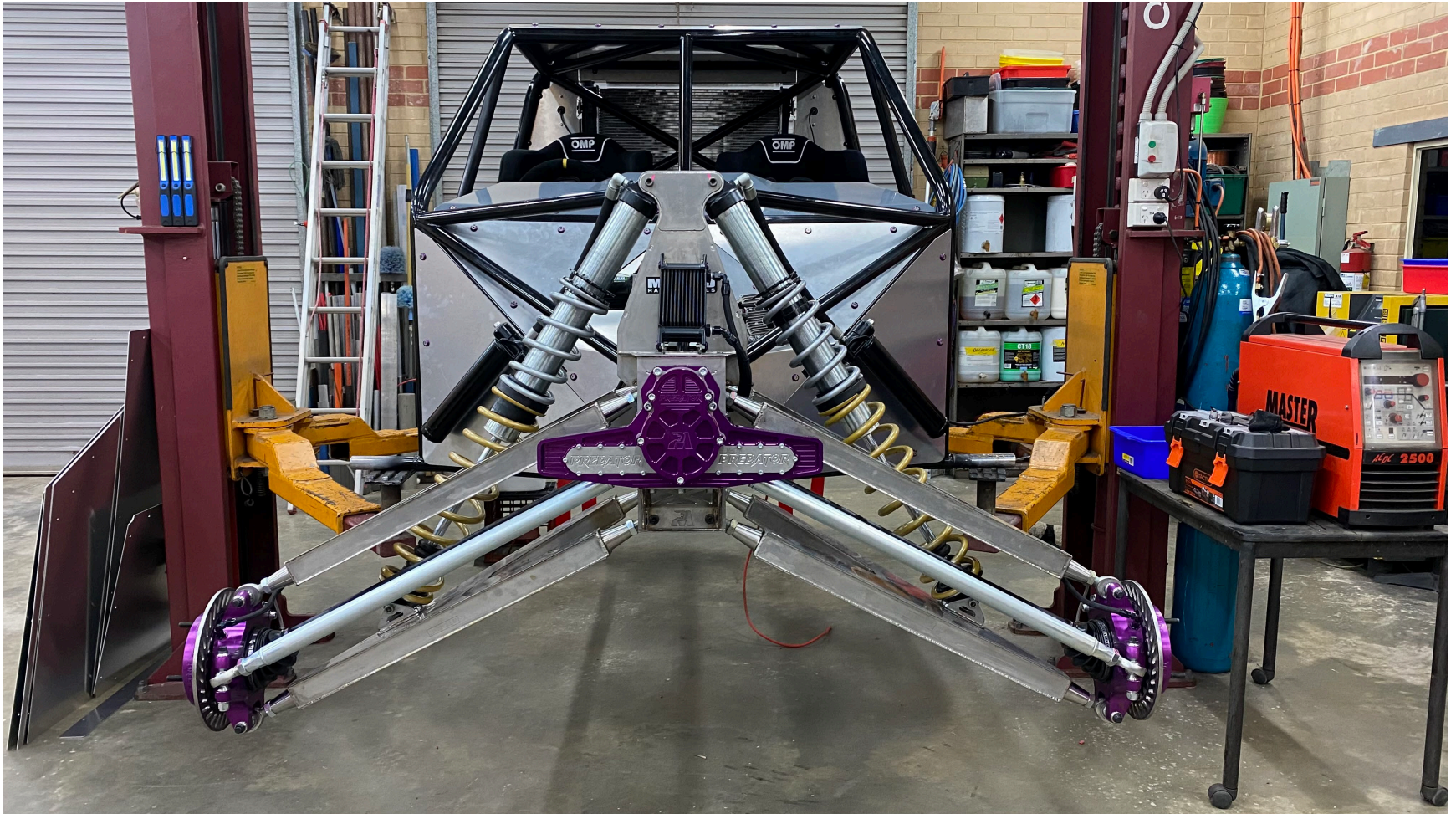
FLAT PACK – BUILD YOUR OWN 3D CAD DESIGNED



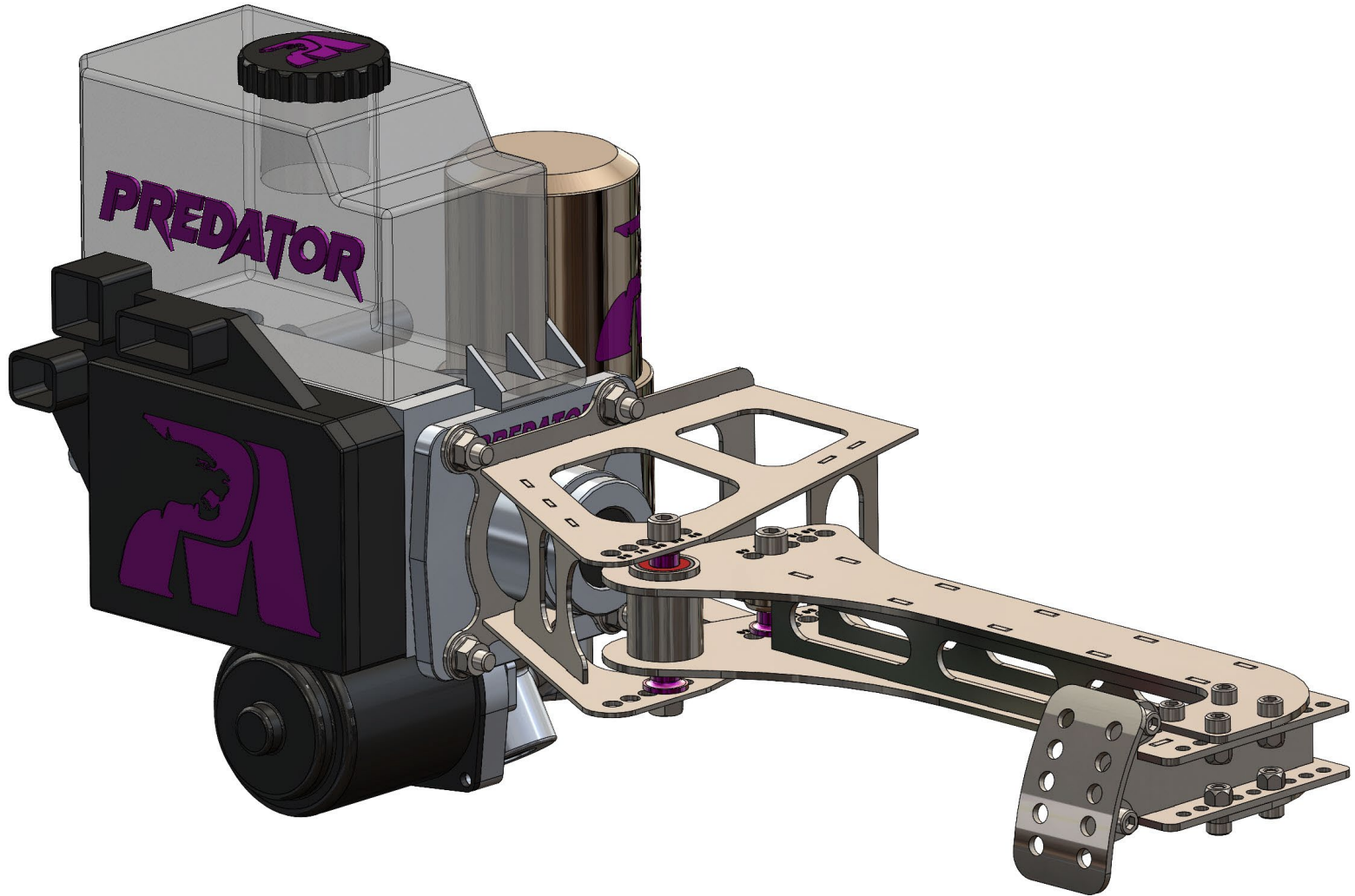
Ultra Light 37" Tires – Ultra Light Wheels



BUILD YOUR OWN ULTRA LIGHT V8 4X4 BUGGY



Electric Brake Booster (3500 PSI)



WELD IT – ASSEMBLE IT – DRIVE IT !

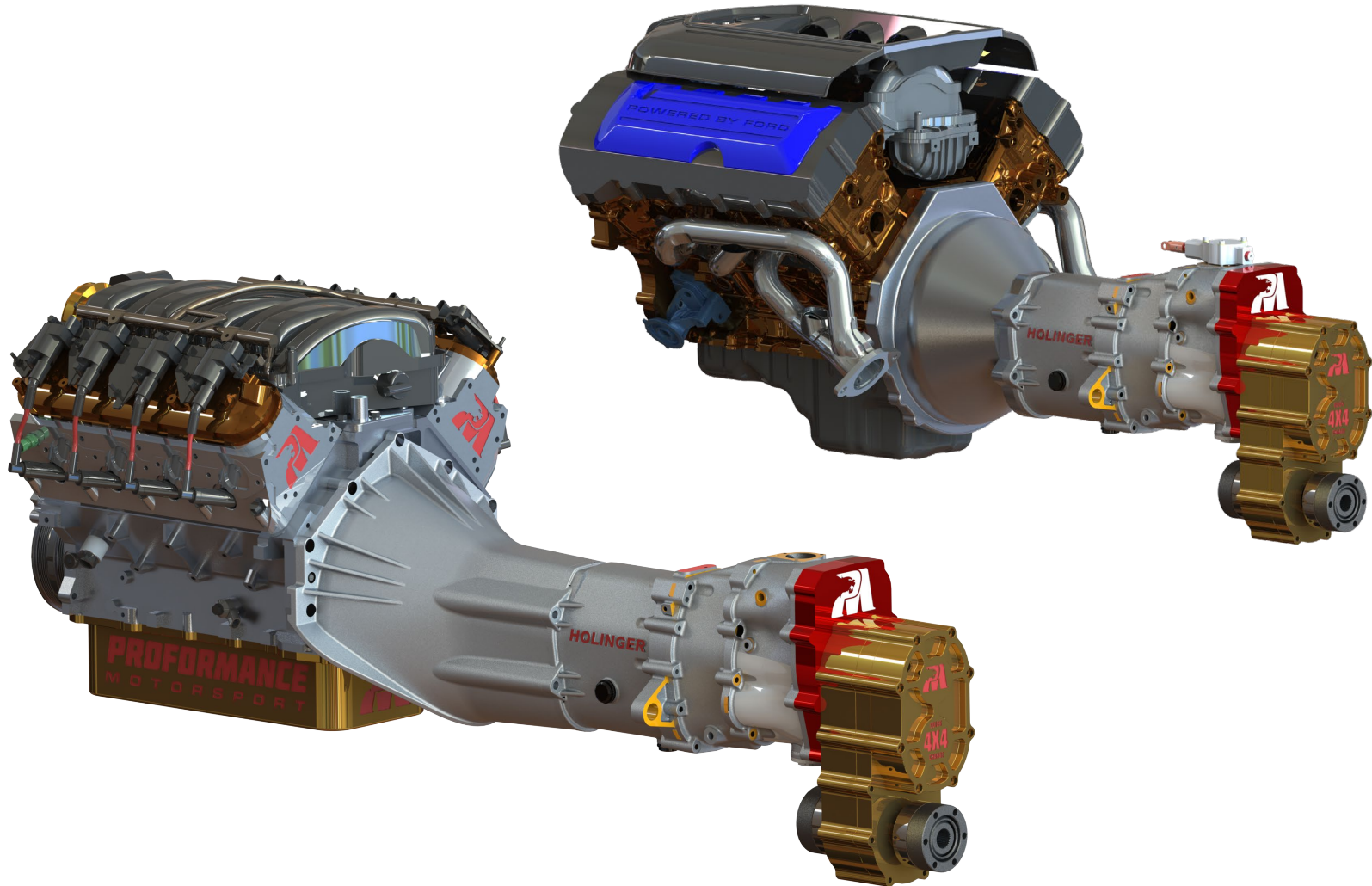


THE ULTIMATE 4X4 V8 BUGGY

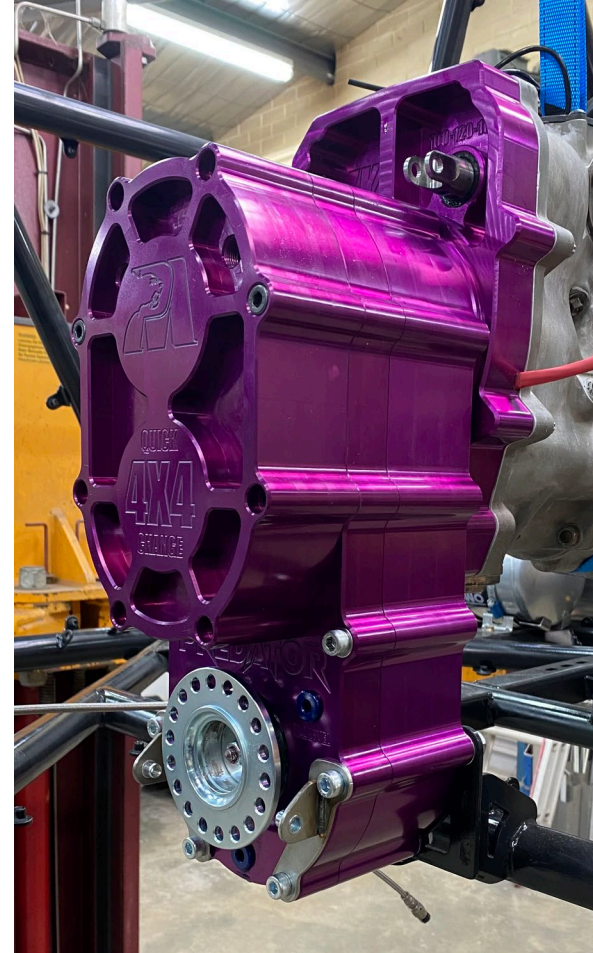
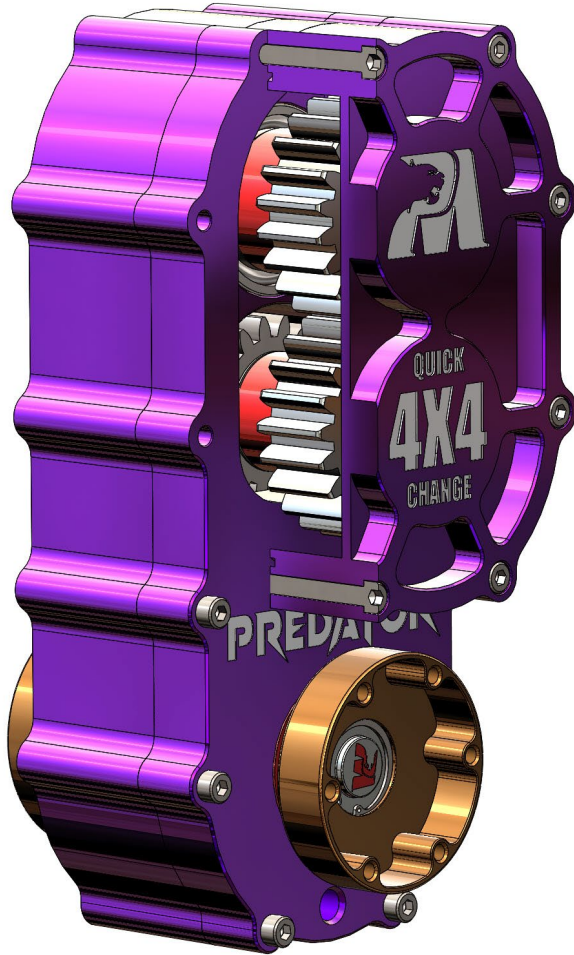
- Don't buy a "donor" SXS to get a few "bits" then throw the rest in the bin
- Don't waste your money on a Toy SXS – Build your own with our DIY Kit
- Reliable Car Engines: 4 Cyl, V6 or V8 – NO RUBBER BELTS !!



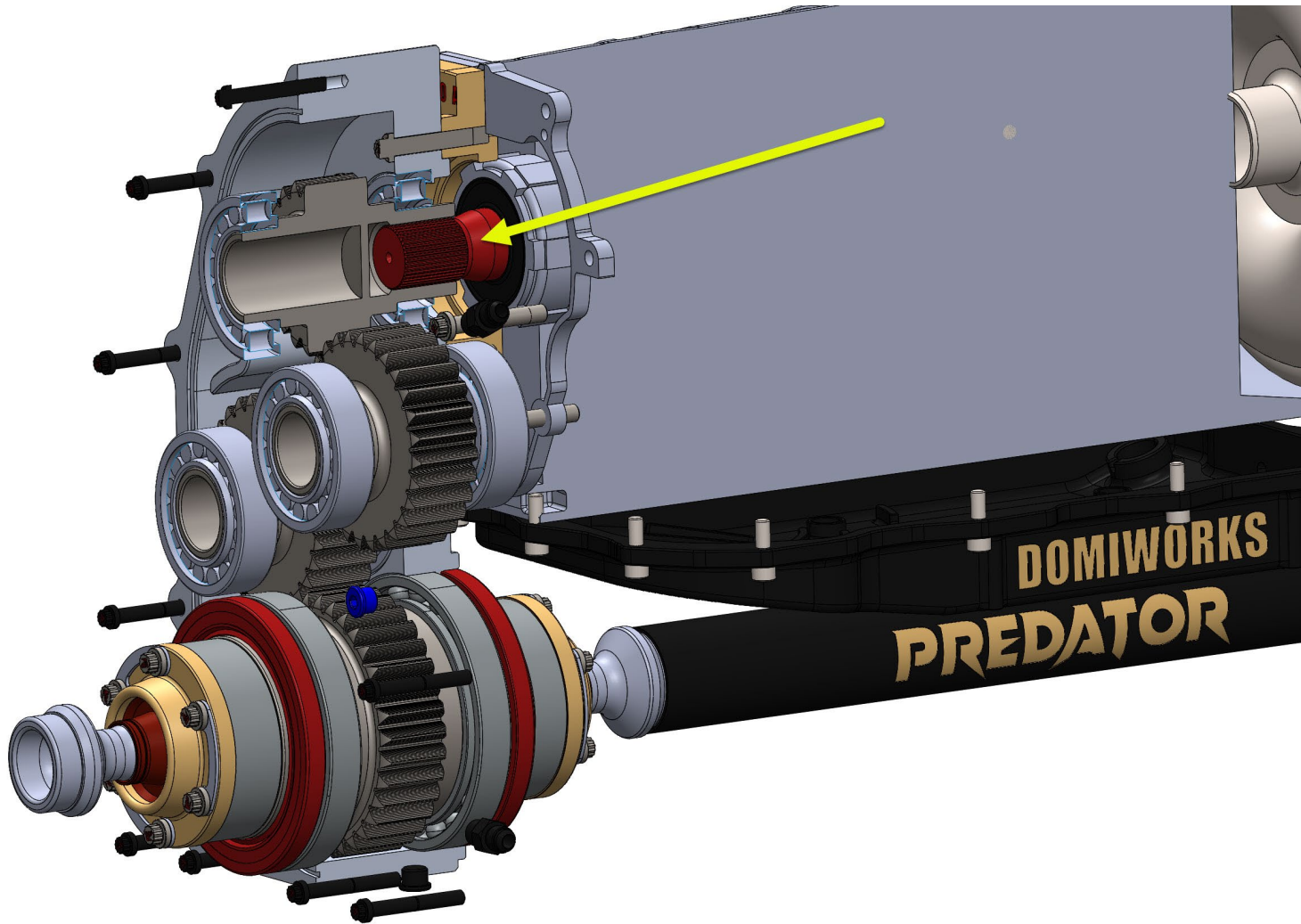
FORD/CHEV/TOYOTA
V8, V6, 4 Cyl



QUICK CHANGE TRANSFER CASE

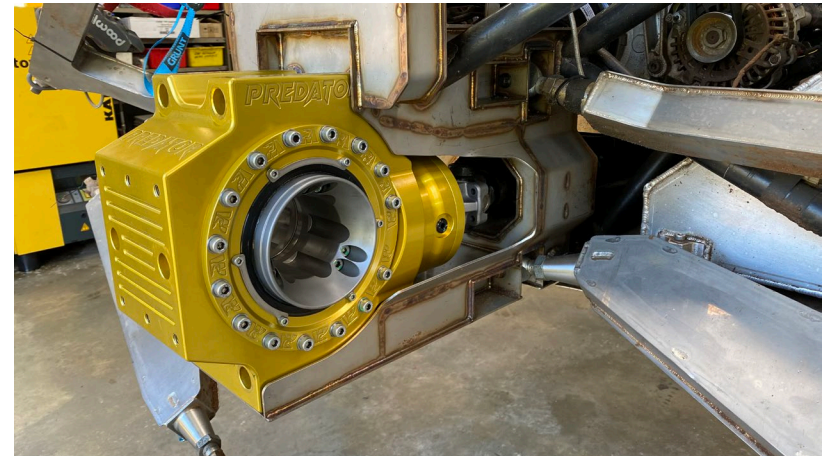
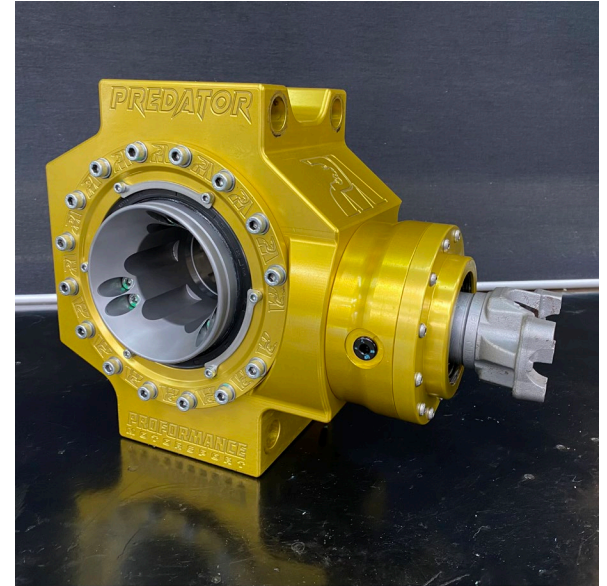


REVERSE ROTATION TRANSFER CASE



ULTRA NARROW DIFFS - INTERNAL CV JOINT

- Massive 8.0" Diff Bearings
- 40 Degree Internal CV Joint
 - Longer Axles
 - More Wheel Travel
 - Less CV Angle
 - Increased Reliability
- Massive 30 Spline CV Star
 - 300% stronger than OEM SXS CV
 - Stronger CV
 - Stronger Axle
 - Less DNF's



40 DEGREE CV – MORE WHEEL TRAVEL



BILLET HUBS - INTERNAL CV JOINT

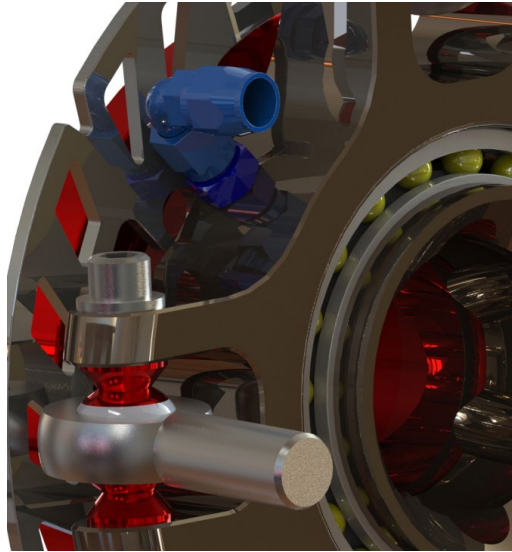
- Massive 6.0" Wheel Bearings
- No Spline to Break off
- Internal CV Joint
 - Longer Axles
 - More Wheel Travel
 - Less CV Angle
- Massive 30 Spline CV Star
 - 300% stronger than OEM SXS CV
 - Stronger CV
 - Stronger Axle
 - Less DNF's
- 45 Degree CV Angle
 - More Steering Angle
 - Incredible Handling/Steering



HUBS WITH INTERNAL CV JOINTS – 30" WHEEL TRAVEL

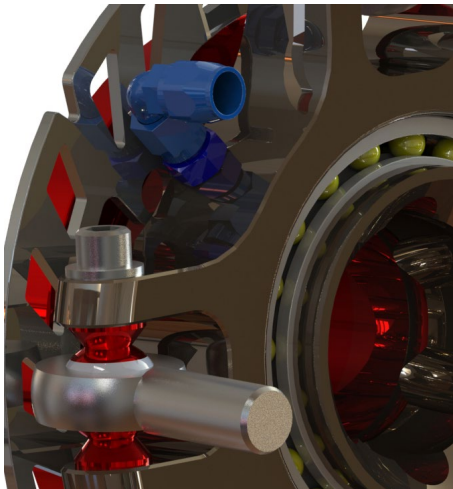
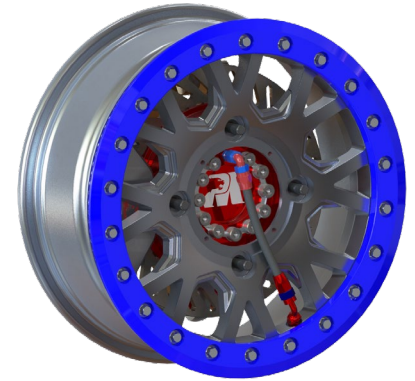


TIRE INFLATION/DEFLATION



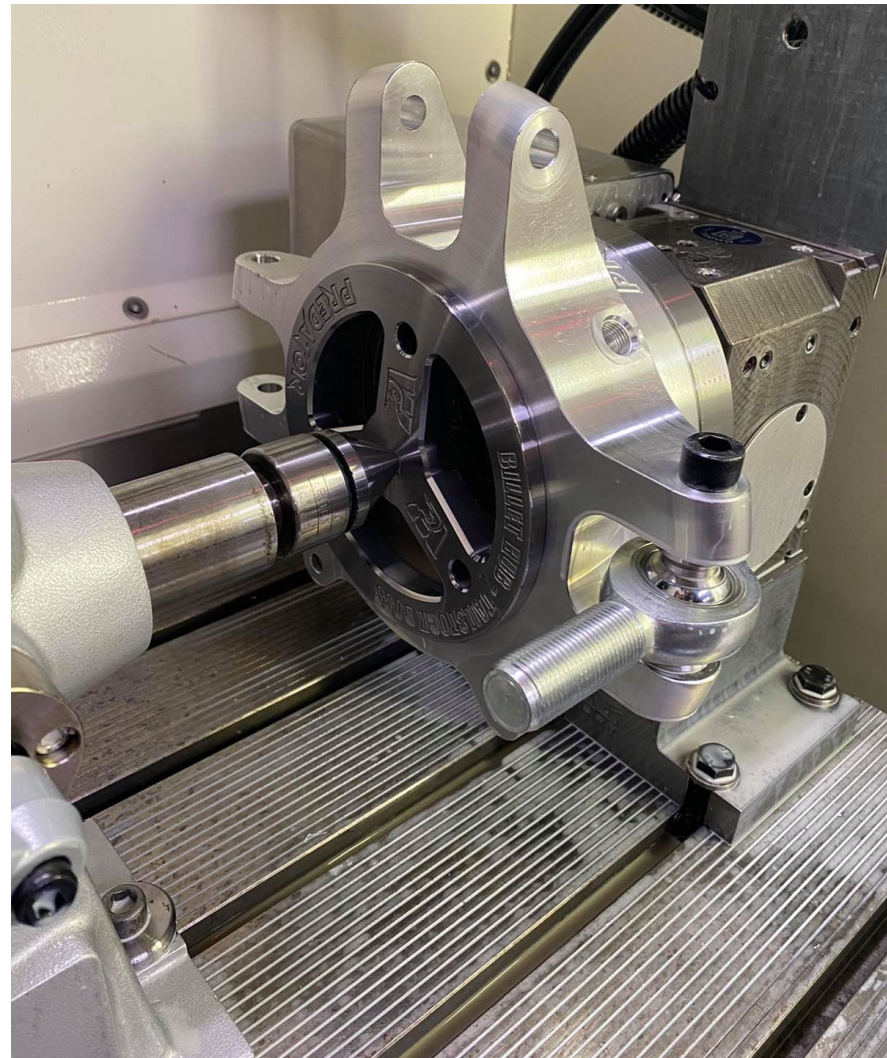
TIRE INFLATION/DEFLATION

- Central Tyre Inflation
- Possible via our SXS Hubs with Internal CV Joints
- Deflate and Inflate whilst driving

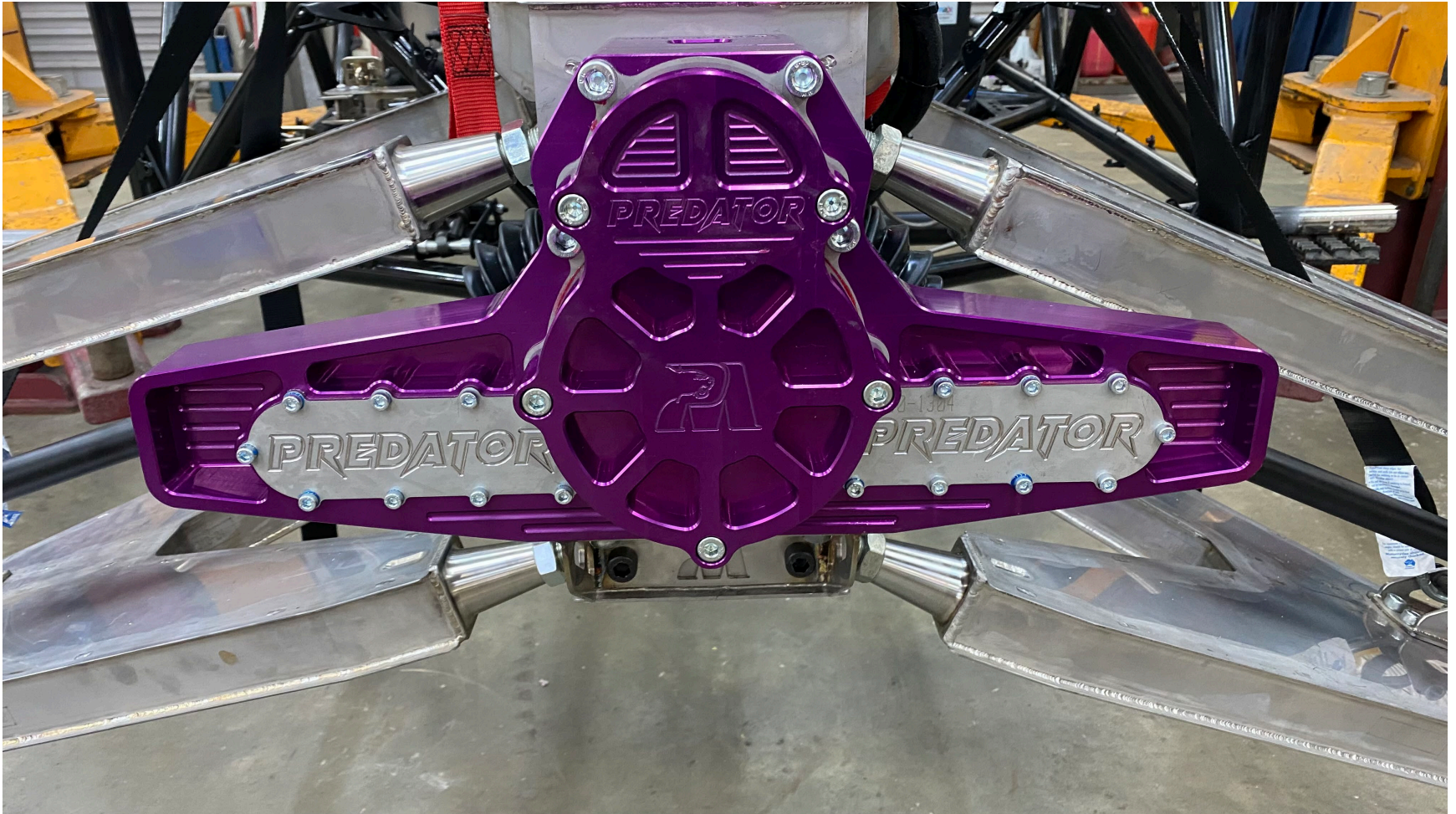


LESS SPARES - ONE HUB FITS ALL 4 CORNERS

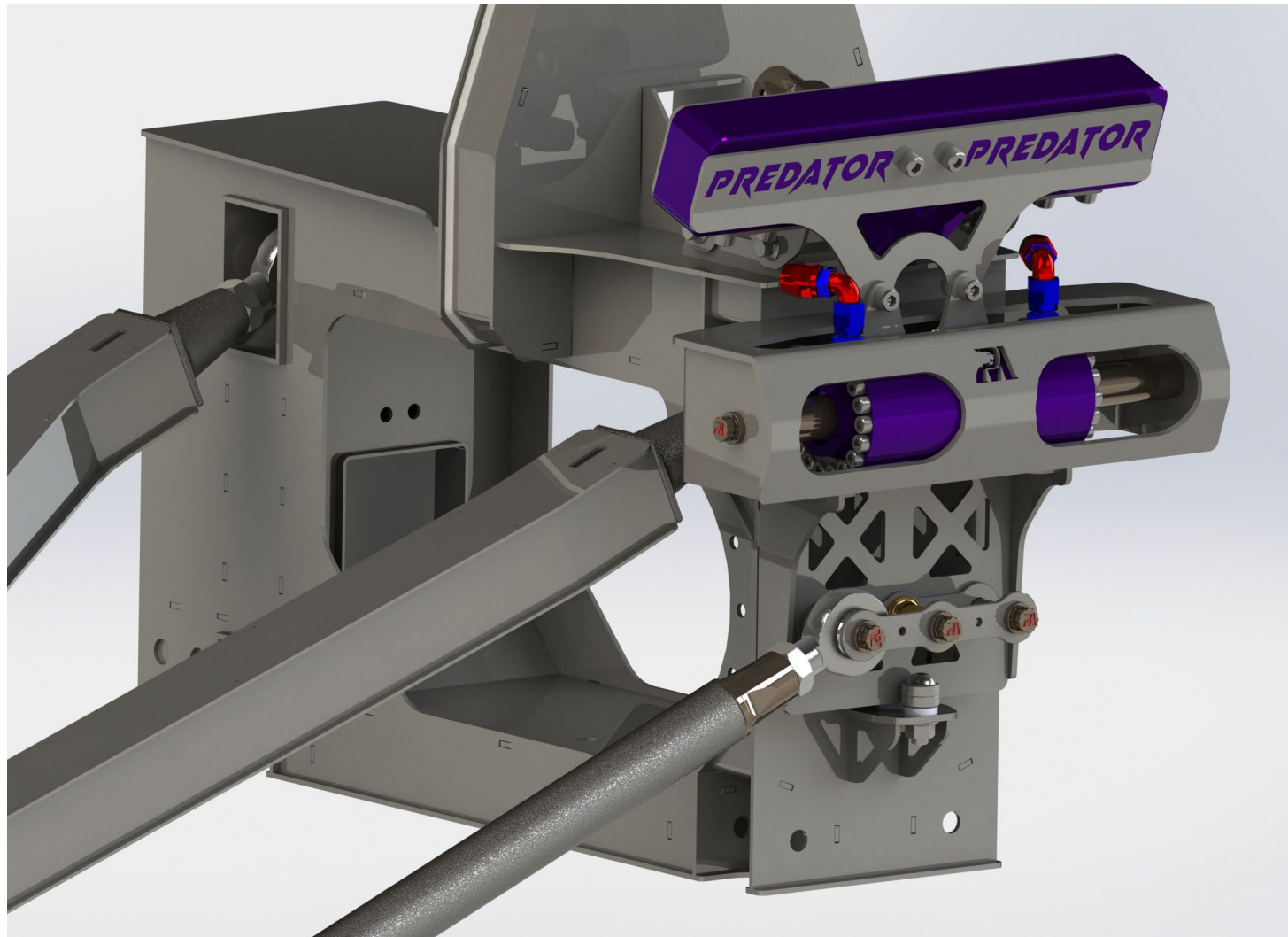
- 6061 T6 Aluminium Billet Case
- One Hub fits all 4 corners
 - Single spare part
 - Can carry spare when competing
 - Lower production cost
- Fully Sealed - Twin Oil Seals
 - **Waterproof** IP68 (Submersible)
- 4 Piston Wilwood Race Caliper
 - 290mm S/S ROTOR
 - Floating Rotor
- Double Shear Heim Joint Pivots



BILLET STEERING RACK – ELECTRIC POWER ASSIST



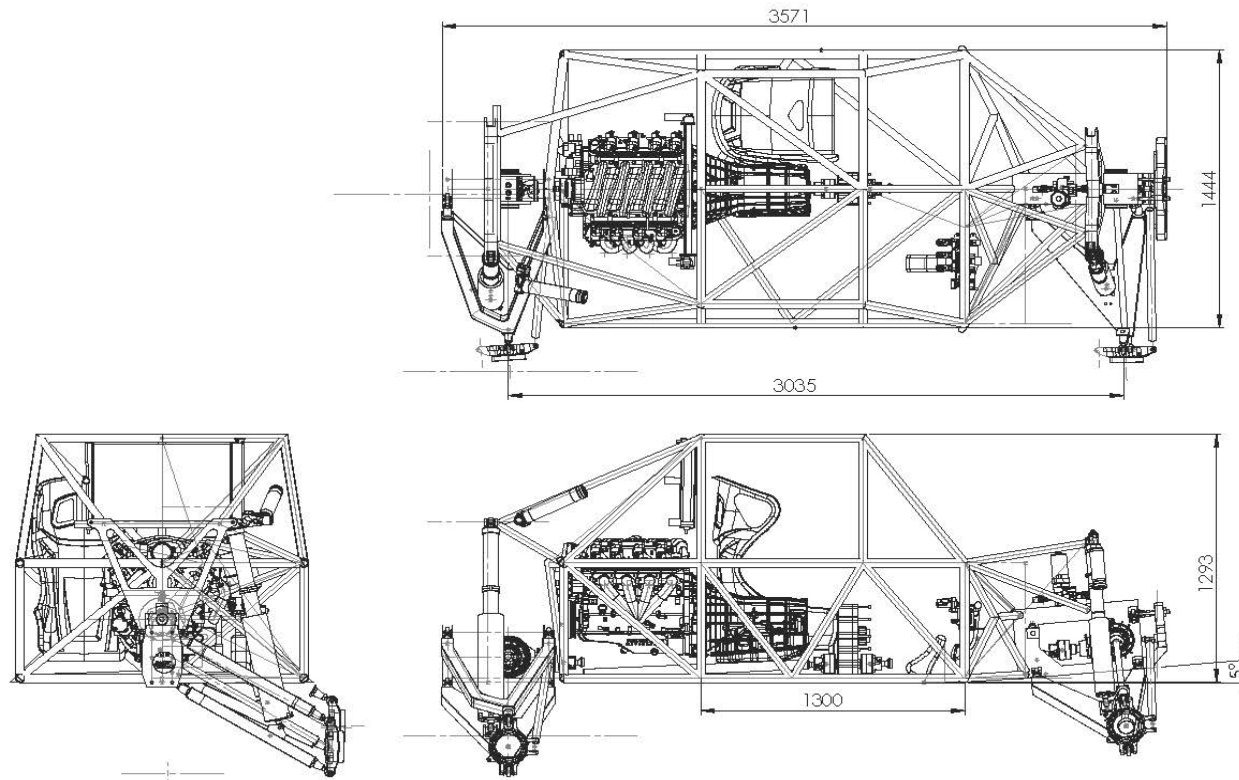
Hydraulic Power Steering (option)



Rapid Response Power Steering System Ultra High Pressure Pump (Option)



VEHICLE DIMENSIONS



UNLESS OTHERWISE SPECIFIED: DIMENSIONS ARE IN MILLIMETERS		Heat Treatment: Finish:		APPLY TO ALL TO ALL TURNED EDGES UNLESS OTHERWISE		PROFORMANCE[®]	
SURFACE FINISH: TOLERANCES: LINEAR: ANGULAR:						TITLE: PREDATOR 4X4 SXS FLAT PACK DIY BUGGY	
REV	DATE	REASON FOR REVISION					
01							
02							
03							
04							
DATE		NAME		MATERIAL:		PART NUMBER: -	
DRAWN						A3	
CHECKED							
MFG				WEIGHT: g		SCALE: 1:100	
						SHEET 4 OF 4	



WHAT ELSE DO I NEED?

- Below is a list of other components required to complete your Predator Flat Pack 4X4 Buggy
- Price depends on your budget
 - New or used?
 - *Many components can be obtained from a wrecking yard for budget builds*
 - *You may already have some of these components.*

Engine + Transmission (Lots of options)	Wheels (15x6, 4x156mm) Tires (37x10x15)
Seats - Harnesses	Fuel (Gas) Tank
Radiator/Fan Assembly	EPS (Electric Power Steering) Motor
Electric Brake Booster (Toyota)	28 x FK Rod Ends (RSMX12T)
4 x Wilwood Brake Callipers (120-15374)	3 x Oil Pumps/Coolers
Brake Lines – Oil Lines	4 x Can Am X3 Shocks
Steering Wheel + Uni Joints	2 x Tailshafts with CV's (Propellor Shafts)
Electrical ECU/Harness/Lights	Axles/CV Joints (Proformance, RCV)



GLOBAL EXPORTS

- We ship Flat Pack Kits (Chassis, Diffs, Hubs) all over the world
- CAD Files also available for purchase for local production







RACE PROVEN TECHNOLOGY



Additional Information

- Web Page: [Predator V8 4X4 SXS](#)
- Video: [Ultra Narrow Diffs Explained](#)
- Video: [Bearing Technology Explained](#)
- Video: [Warning – Counterfeit Chinese Safety Harnesses](#)
- Video: [Predator Ultra Narrow Diff](#)
- Video: [4X4 Trophy Truck Testing](#)
- Video: [4X4 Trophy Truck Racing](#)
- Video: [Proformance Motorsport Workshop Tour](#)



CONTACT INFORMATION



Scott Bryce

Managing Director

1405 Stoneville Road

Mundaring

Western Australia 6073

Ph +61 8 9295 0686

Cell +61 431 624 783

Email: info@proformance.com.au

Website: www.proformance.com.au

Skype: [ProformanceMotorsport](https://www.skype.com/en/contacts/skype/ProformanceMotorsport)



PREDATOR

facebook

